

## WiFi intelligent infrared detector manual

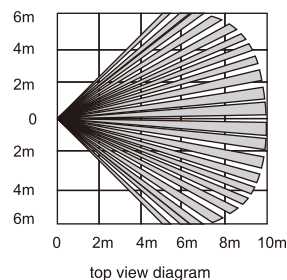


Please read this manual carefully before use and keep it for future reference.

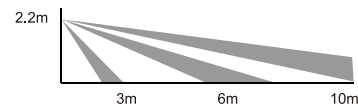
### Overview

The infrared detector is used to detect when an intruder enters the room, the human body moving sensor can capture the infrared rays of the intruder, enter the alarm state, notify the intruder to enter through the timely push of the WiFi, and timely link the IP camera to record the evidence to the user's mobile phone. Send a signal. Suitable for home, hotel, office and other places.

### Detector detection coverage area



2



Side view

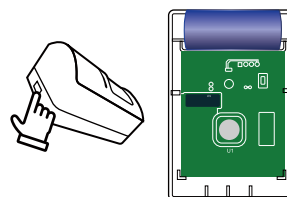
### Product parameters

Input voltage: DC3V CR123A  
 Quiescent Current:  $\leq 45\mu\text{A}$   
 Alarm current:  $\leq 160\text{mA}$   
 Low power undervoltage:  $\leq 2.6\text{V}$   
 WIFI: 802.11b/g/n  
 Detection distance: 10M  
 Detection angle: 110°  
 Installation method: Bracket mounting  
 Operating temperature: -10-50°C  
 Working humidity: Up to 95% RH

3

### product instructions

1. Press the lower case buckle by hand, remove the lower case, turn on the power, and the indicator light is on.



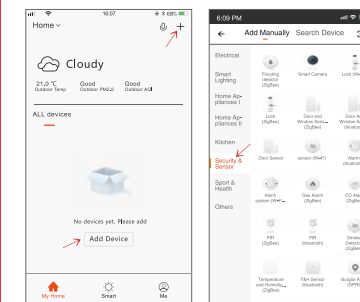
2. Download the TUYA app in major app stores, or scan the QR code below.



iOS/Android

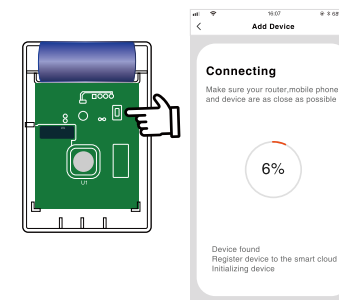
4

3. Log in with the mobile number registration APP, click on the "My Home" interface "+" or click on the middle blank to "add the device", select security sensor, click on the "Alarm system"



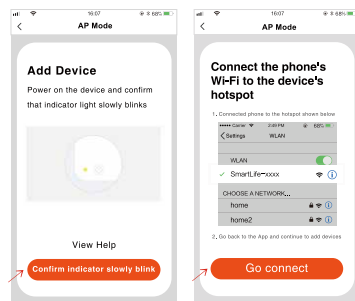
5

4. Press and hold the RESET button on the board for more than 5 seconds, the indicator light flashes into the automatic distribution network state, and the APP enters the "WIFI password" according to the prompt and clicks OK.



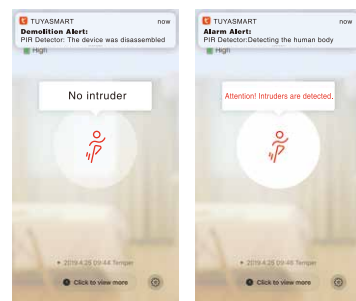
6

5. In the automatic distribution mode, the indicator light flashes quickly, press and hold the reset button for 5 seconds, the indicator light flashes slowly, enter the manual distribution mode, APP selects the compatibility mode, enter the "WIFI password" according to the prompt, click to confirm and switch to WIFI. Set the interface, connect to the Smartlife\_XXXX network and return to the APP to continue adding devices.



7

6. After the distribution network is successful, click the infrared icon to enter the interface, trigger the infrared prompt "Warning, detect the intruder", press the tamper prompt "The device is removed" (after the distribution network is successful, install the face shell, re-energize, about 60 infrared Initialization is successful and enters the normal monitoring state)



8

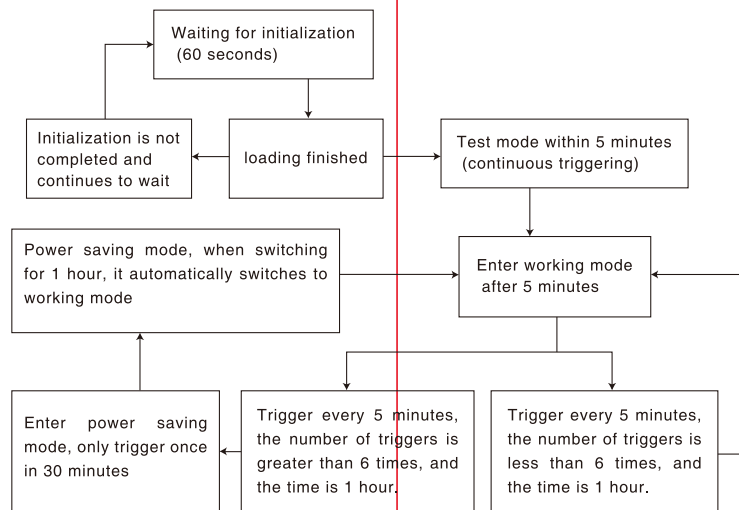
### Operating mode

1. Test mode: After power-on, the initialization is completed (the indicator flashes 3 times), and the test mode is within 5 minutes. The alarm can be triggered continuously and enter the working mode after 5 minutes.

2. Working mode: It can only be triggered once in 5 minutes, and starts to count for one hour. If the number of triggers is less than 6 times, the default is working mode.

3. Power saving mode: In working mode, the number of triggers is more than 6 times in 60 minutes. After one hour, enter the power saving mode. At this time, only 30 minutes can be triggered. In the power saving mode, after one hour, it will automatically enter. Operating mode.

9



10

11

### Installation Precautions

1. The installation location should select the entrance that the intruder may break into, such as doors, windows, etc. try to make the intruder traverse the detection area.

2. The installation location should be close to air conditioners, electric fans, refrigerators, ovens and objects that can cause temperature changes, while avoiding direct sunlight on the detector.

3. The front of the detector lens should not be obstructed by the object, so as not to affect the detection effect.

4. It is recommended to use the detector mounting bracket.

12