

# Smart CO Detector

## Wi-Fi Version



- 1 -

### Product Description

This product is an intelligent carbon monoxide detector. It is designed with WIFI networking technology to detect carbon monoxide gas. The detector uses high-performance electrochemical sensor with sound and light alarm, it can also be connected to solenoid valve. It has the characteristics of high stability and small sensitivity drift. The alarm information is transmitted to the user APP through the cloud, which is simple and clear.

### Electrical Specification

1. Working voltage: 110~230VAC 50HZ
2. Average Consumption: <1.5W
3. Alarm Sound: 85dB/m
4. Alarm output : Relay output ( NC ) , 12V solenoid valve can be connected.
5. WIFI: 2.4G -- 802.11 a/b/g/n.
6. Test/silence button
7. Alarm concentration :
  - 30 ppm 120 mins alarm
  - 50 ppm 60-90 mins alarm
  - 100ppm 10-40mins alarm
  - 300ppm 3 mins alarm
8. Working temperature: -10~50°C.
9. Working Humidity: 10%~95% RH

- 2 -

### TIPS

1. This product cannot be used to detect natural gas (methane), propane, butane or other flammable gases.
2. Clean once a month. Use a household vacuum cleaner with a soft brush to clean it.
3. Do not wipe the detector with detergent or solvent, and avoid spraying air freshener, hair spray paint or other aerosols on the detector.
4. Attention should be paid to the occurrence of an alarm. The piping valve must be closed immediately and windows must be opened for indoor air circulation. Except the correct usage of the detector, fire awareness should be strengthened.

### Usage

1. Plug the detector to the power, it will enter the preheating state. After 90 seconds, preheating will be completed, then press and hold RESET / TEST on the device for network connection.

### LED Indicator

Status	LED Indicator	Alarm	Solenoid Valve Output	Relay Output
Testing	Yellow/Green/Red LED keeps flashing alternatively	Yes	Yes	Yes
Preheat	Yellow LED keeps flashing, Green LED keeps flashing for 90 seconds	No	No	No
Fault	Yellow LED keeps on	No	No	No
Standby	Green LED is on ( wifi connection ) , Green LED flash ( no wifi connection)	No	No	No
Alarm	Red LED keeps flashing	Yes	Yes	Yes

### Installation:

Single-storey house: it is recommended to install a detector in each bedroom and leave a detector at a distance of 6m between the burning chimney and the gas equipment.  
 Multi-storey houses: it is recommended to install at least one detector in each bedroom, if there is a basement, please install at least one detector; install the detector at a distance of 6m between fire and gas equipment.

### Installation Notice

1. Near the bedroom and living area or where you think carbon monoxide may leak, choose a proper location so that the alarm can be heard immediately.
2. It is not recommended to install the detector in places such as garages, kitchens or stoves that may cause false alarm. Do not install in very dirty, dusty or greasy places. Oil, dust or household chemicals will damage the sensor inside the detector, making the detector not work properly.

- 3 -

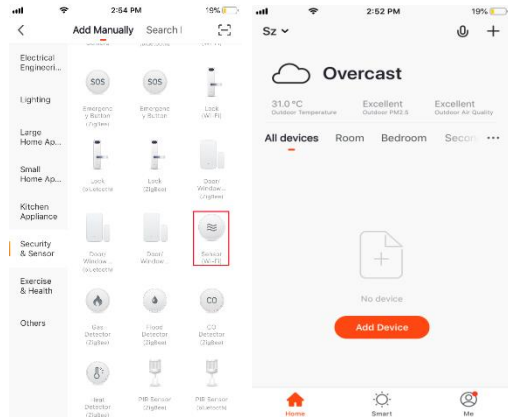
### APP Instruction

1. Download "smart life" APP  
Search "smart life" in application market to download and install the APP.
2. Registration  
Click the APP and register an account according to the wizard.



### 3. Add Or Delete Devices

Click the APP and log in, click Add Device --> Security Sensor --> Sensor (Wi-Fi) .



Power on the detector, press the “reset” button for 5 seconds, then the detector will enter into WiFi connection status.(Green LED flashes quickly, indicating that it is in ‘Smart Link’ Connection mode. Green LED flashes slowly, indicating that it is in AP mode.).

“Smart Life” APP has two wifi connection mode, ‘Smart Link’ is the default mode. Users can switch the connection mode by pressing “Reset” button shortly during the process of network connection. If the green LED keeps on, the detector is in network connection successfully. Press the button for more than 10 seconds to enter unwinding state. Once unwinding state is finished, It will enter into network connection state, then the detector can be self-detected remotely by APP.