

# Shenzhen ForLinkon Technology Co., Ltd.

Thank you very much for purchasing WIFI version curtain switch controller series product produced by our company, in order to make our products serve better for your life, please read this manual carefully before using, and keep it for future reference.

## 1、 specification:

Applicable products: all kinds of adjustable light fixtures

Operating voltage: AC 100 - 240V, 50 / 60HZ

Load power: 0 ~ 400W

Standby power consumption:  $\leq 0.5$  W

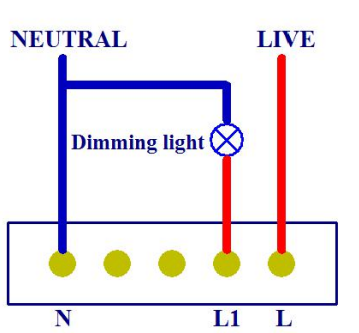
Working temperature: 0 °C ~ 80 °C

Relative humidity: 10% to 93% (non-condensing)

Control: Touch, a mobile control, brightness memory function


Wiring method: zero, FireWire

## 2、 the wiring diagram:





## 3、 the manual operation:


① there are  ,  ,  icon buttons on the dimmer switch panel, Its function

includes enhance, on / off, weaken. , when the  On / off key indicator light is blue, the dimmer switch is in the standby state (that is, turn off).

② In the standby mode, click Touch  On / off key then the light get brighter

gradually; double-click touch  On / off key, under the fast mode the light

turns to the strongest state. Touch in the power on state  Key can enhance

the brightness of the light, light levels can weaken when touch the key , press



or

Can automatically increase or decrease the light, the indicator lights of the touch key changes with the operation of until the extremity.



③in the boot state, click Touch On / off key, turn off the lights (ie, turn off the lights and memorize the brightness).

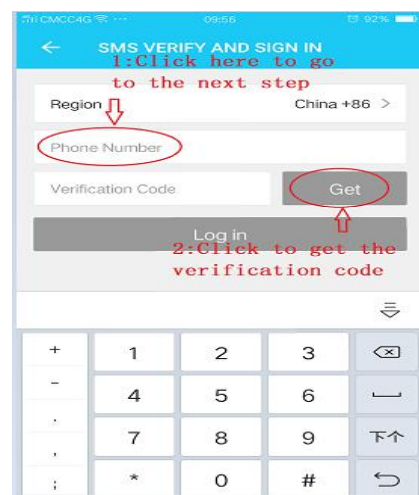
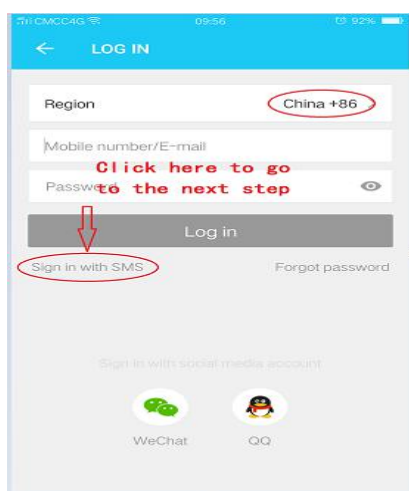
4、the mobile operating: (divided into local and remote control modes when the phone and the switch in the same network as the wireless LAN control when the phone network operators outside the network, compared with remote control NOTE: When you add a device need to use the phone through wireless router network)

①Install mobile APP (keyword search: "intelligent life" or

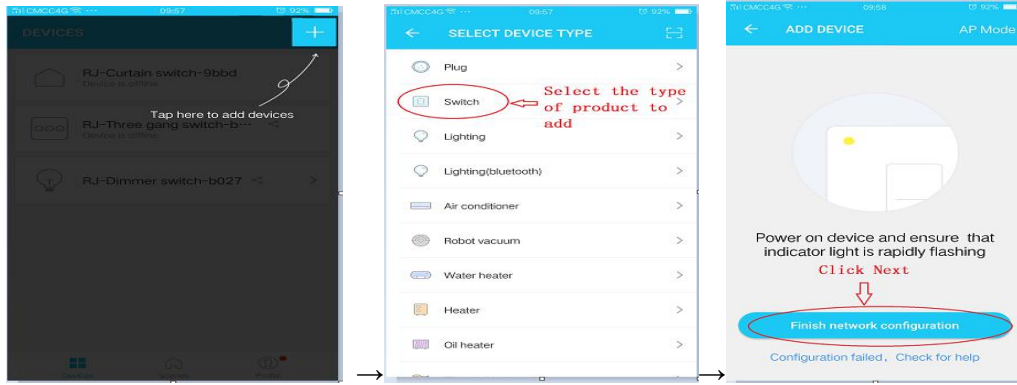


sweep)

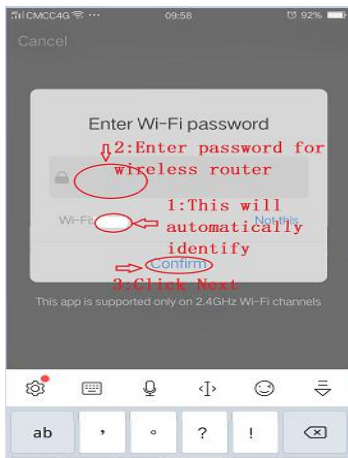
②mobile phone register (as shown)



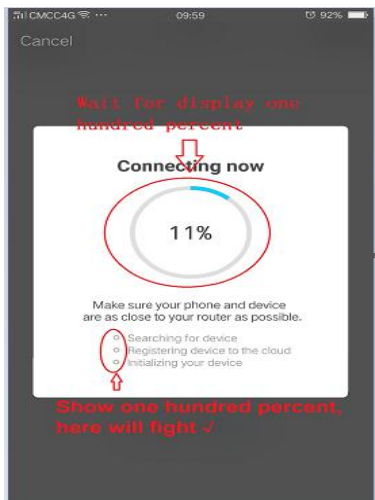
③add the switch device (as shown) the switch required normal power)



④ set up the work WIFI for device (as shown)



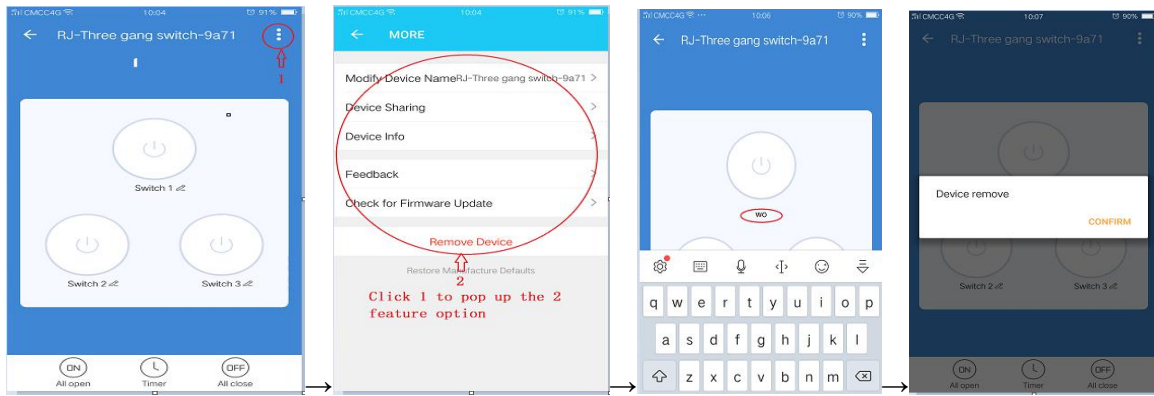
⑤ automatically added process (as shown)



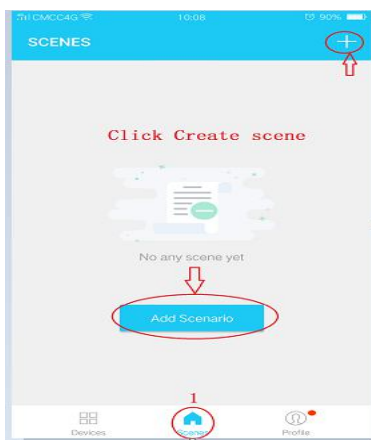
⑥ successfully completed the above steps to add the product to operate

⑦ other functions

a) naming device , removed (as shown)



b) Editing scenes (as shown)



## 5、manually reset the device

### ①Reset light switch 、 light curtain controller and other equipment

- O Press any key of the device for 15 seconds until light flashes indicating a successful reset;
- O indicator light flash quickly (flash 2 times every second) indicating fast mode;
- O indicator light flash slowly (1 flash every 3 seconds) indicating hotspot mode;
- O under fast mode, press any device key for 15 seconds until the indicator flashes slowly, indicating it has switched to focus mode; and vice versa.

### ②Reset the dimmer switch

- O In the dimmer switch off long press down key for 15 seconds until light flashes, indicating a successful reset;
- O indicator lights flash quickly (2 times flash every second) indicating fast mode;
- O indicator lights flash slowly (1 flash every 3 seconds) indicating hotspot mode;
- O under fast mode, press and hold down the device key for 15 seconds until the indicator flashes slowly, indicating that it has switched to focus mode; and vice versa.

## 6、curtain switch accessories:

- Curtain switch instructions 1 piece
- Warranty card 1 piece
- the screws 2 pieces

The above accessories are subject to change without prior notice. If you have any questions, please contact your local dealer or contact us.