

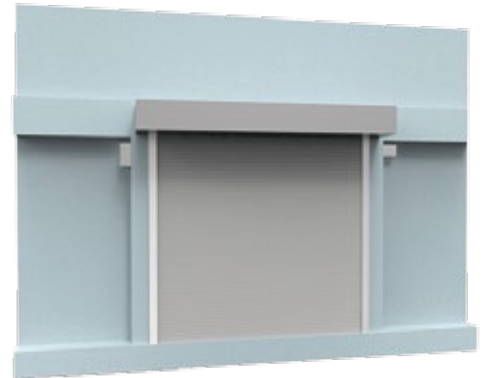
应用 Application

抗爆卷帘门一般设置在抗爆建筑出入口。当爆炸发生时，抗爆卷帘门可阻止冲击波、碎片及火焰外泄，从而保护人员和设备的安全。

抗爆卷帘门主要应用于化学品仓库、弹药库、军事基地以及其他一些对爆炸防护有高要求的场所。

Blast roller shutter door is always set at the bigger entrance of the blast resistant structures to prevent the blast wave, debris and flames from spilling out or leaking and protect the people and equipment inside the building when the explosion happens.

The door is mainly used in chemical warehouses, ammunition warehouses, military bases and other places where high security requirements for explosion protection.



特点 Features

- 抗爆能力强，抗爆等级达10 bar。
- 门体密封条采用阻燃橡胶制品，耐火性能强。
- 正常维护下产品使用寿命可达到20年。
- Good blast resistant performance, can withstand the load of 10 bar.
- Good fire proof performance, the sealing strip should be frame retardant type.
- Life time of over 20 years with normal maintenance.

性能参数 Performances

性能 Performance		等级 Rating	测试机构 Testing Institution	
抗爆等级	Blast Resistance	≥ 10bar	解放军总参三所	PLA The third Scientific Research Institute
抗爆等级	Blast Resistance	≥ 10bar	公安部检测中心	China Ministry of Public Security
抗爆等级	Blast Resistance	≥ 10bar	南京理工大学	Nanjing University of Science and Technology
耐火隔热性	Fire Insulation	≥ 1 Hours	公安部天津消防研究所	Tianjin Fire Research Institute of MPS
耐火完整性	Fire Integrity	≥ 3 Hours	公安部天津消防研究所	Tianjin Fire Research Institute of MPS

抗爆卷帘门 Blast Roller Shutter Door

主要尺寸 Main Dimensions

型号 Specification	开洞尺寸Hole Size		净尺寸 Net Size (mm)	重量 Weight (kg)
	宽 W (mm)	高 H (mm)		
DBS - A200x200	2000	2000	2000x2000	400
DBS - A300x300	3000	3000	3000x3000	1000
DBS - A400X400	4000	4000	4000x4000	1600

参考图 Overview

